



Blue Phantom™

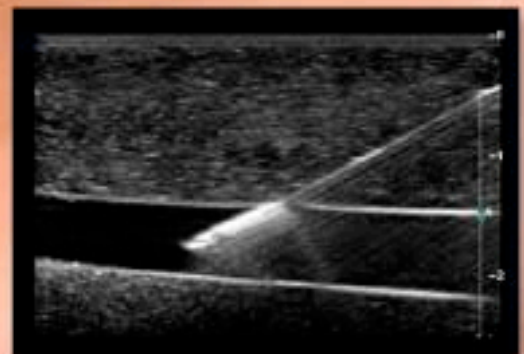
www.bluephantom.com

Ultrasound Training Models

Use and Care Instructions



Sagittal image from CVA model





Giving you the confidence only experience can offer™

Congratulations on your purchase of Blue Phantom's™ ultrasound simulation model(s) for hands-on training. Every product we manufacture at Blue Phantom is specifically designed to be the most realistic and resilient ultrasound simulation phantoms available anywhere. Our high standards for quality manufacturing and design guarantee that you receive only the absolute best.

About Blue Phantom

Blue Phantom™ brings you the most realistic and durable ultrasound hands-on training models available anywhere. At Blue Phantom we know that learning to use ultrasound requires practice. You gain confidence and skill through experience. That is why we offer you the best ultrasound simulation training available.

Blue Phantom Warranty

Blue Phantom takes pride in its quality design and manufacturing standards. Our products are warranted to you by Blue Phantom for 1 year from the date of purchase against defects in workmanship and materials. During the warranty period, a defective part or product will be replaced either with a new or reconditioned part or product, depending on the availability at the time.

This warranty covers normal consumer usage and does not cover damage incurred through use not consistent with the product design. Failure that results from alteration, accident, misuse, vandalism, or neglect is not covered under this warranty. This warranty does not extend to any products that have been used in violation of written instructions.

IMPORTANT SAFEGUARDS

1. Read Instructions – All safety and operating instructions should be read before the unit is operated.
2. Upon receiving unit, inspect to make sure that all electronic access ports are sealed shut. If any are open or accessible, please report this immediately to Blue Phantom

Telephone: (425) 828-7886

Email: customersupport@bluephantom.com

Web: www.bluephantom.com

3. Retain Instructions – The safety and operating instructions should be retained for future reference.
4. Heed Warnings – All warnings in the operating instructions should be adhered to.
5. Follow instructions – All operating and maintenance instructions should be followed.
6. Unplug unit when not in use
7. Accessories – Do not place this unit on an unstable cart, stand, tripod, bracket, or table. The unit may fall causing serious injury to a child or adult, and serious injury to the unit.
8. CAUTION: Please use extreme care when using needles and sharp objects as to not accidentally injure yourself during training.
9. Servicing – Do not attempt to service this unit yourself as opening or removing covers may expose you to dangerous voltage or other hazards. Refer all servicing to qualified personnel.



Pelvic Model Use and Care Instructions

Model # BPOB1200/BPOB1210/BPOB1220

Congratulations on your purchase of this Blue Phantom™ endovaginal ultrasound hands-on training model. Every product we manufacture at Blue Phantom is specifically designed to be the most realistic and resilient ultrasound simulation phantoms available anywhere. Our high standards for quality manufacturing and design guarantee that you receive only the absolute best.

Included in this package

- Pelvic Ultrasound Training Model
- Privacy Skirt
- Use and Care Instructions
- Carrying Case



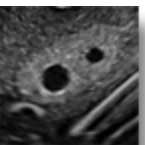
Intrauterine Pregnancy Model BPOB1200

This model is designed to simulate a 6 week intrauterine pregnancy. Users will be able to identify the intrauterine pregnancy by the presence of a fetus within a gestational sac and chorion with a decidual reaction and endometrial stripe. The left and right ovaries demonstrate normal follicular development and the presence of a corpus luteum cyst on one ovary. Other accessory structures include the broad ligaments, bowel, and bladder.



Ectopic Pregnancy Model BPOB1210

This model is designed to simulate a 6 week ectopic pregnancy with free fluid in the cul-de-sac and a false decidual reaction. The left and right ovaries will demonstrate follicular development as well as corpus luteum cyst. Accessory pelvic structures including the endometrial stripe, bladder, broad ligaments and bowel can also be identified.



General Pathology Model BPOB1220

This general pathology model accurately mimics a multifibroid uterus with a thickened endometrial stripe and a periovarian abscess. An ovarian cyst is observed on the contralateral ovary and there is free fluid in the cul-de-sac. Accessory structures include the left and right ovaries with follicle development, broad ligament and bowel.

Custom Models

Blue Phantom is pleased to help you with your special training or demonstration needs. To learn more about our customized solutions please contact Blue Phantom at (425) 828-7886 or email us at customersupport@bluephantom.com

Introduction to Your Training Model

This model is intended as a platform for endovaginal ultrasound hands-on technique training. The model is designed to be extremely realistic thus mimicking the feel and imaging characteristics of an actual endovaginal ultrasound exam. In order to get the most out of your training platform, it is important that you properly care for your model.

Using Your Training Model

1. Place the model in an appropriate position for scanning.
2. Place ultrasound gel on the endovaginal ultrasound transducer in adequate quantities so that the probe slides naturally into the model. Add more gel as necessary.
 - a. **Using Condoms.** Condoms may be used to cover the transducer as in standard endovaginal exams but they are not necessary. To use a condom simply cover the tip of the transducer with gel, place the condom over the endovaginal transducer and apply gel to the imaging surface of the sheathed transducer.
3. Adjust the ultrasound system controls per the manufacturer's instructions, increasing and decreasing the depth and gain controls until the desired image is obtained.

The Privacy Skirt

1. To dress your model, position the privacy skirt on a table with logo face down.
2. Place the pelvic model in the supine position in the center of the privacy skirt.
3. Wrap the skirt around the hips of the model and secure with Velcro strips. If the skirt is properly oriented the two ends of the skirt should lie flat between the legs.
4. On occasion you may notice your privacy skirt requires cleaning. Simply place the skirt in a washing machine on the gentle cycle using cold water ONLY. Warm or hot water will damage the fabric. Please do not use any laundry soap or detergent. Instead of using a dryer simply let air dry.

Cleaning and Storing Your Model

Your model will rarely require cleaning; you can expect to clean your pelvic model every 6 months with substantial use. You will know your model needs to be cleaned when there is a decline in the ultrasound image quality of the model. Cleaning is easily accomplished using a feminine douching product and the following instructions;

1. Purchase a feminine douche from a drugstore
2. Remove your cleaning kit from your carrying case and take off the plastic covering.
3. Using one hand to stabilize the bottle grab the tip of the cap and pull superiorly until the insertion cap locks into place.
4. With your model in the proper supine orientation, insert the cleaning tip into the vaginal opening. Empty half the contents into the model then carefully prop upright so contents can drain. It is not necessary for the user to swab out the cavity of the model after cleaned as long as you place the model in an upright position. Use paper towels to remove any remaining gel that empties from the vaginal cavity.
5. To store the cleaning kit for later use simply push the insertion tip back into the bottle until it locks into place. This will prevent any liquid from leaking. Place the cleaning kit at room temperature in the model carrying case or another convenient location.
6. Additional cleaning kits can be purchased at most drug stores in the form of a douche kit.
7. Cleaning the outside of your pelvic model is also easily accomplished. Simply take a soft cloth, dampen with warm soapy water and wipe down the model until all usage areas have been cleaned. You may dry with another paper towel or let air dry.

Care must be taken when placing the model in a posture other than the supine position. DO NOT prop the pelvic model up for more than a few hours as the foam legs may endure permanent contour damage.



Blue Phantom Warranty

Blue Phantom takes pride in its quality design and manufacturing standards. Our products are warranted to you by Blue Phantom for 1 year from the date of purchase against defects in workmanship and materials. During the warranty period, a defective part or product will be replaced either with a new or reconditioned part or product, depending on the availability at the time of placement.

This warranty covers normal consumer usage and does not cover damage incurred through use not consistent with the product design. Failure that results from alteration, accident, misuse, vandalism, or neglect is not covered under this warranty. This warranty does not extend to any products that have been used in violation of written instructions.

Help and Technical Assistance

Blue Phantom is committed to providing you with superb products and uncompromising customer support. Should you require assistance feel free to contact us directly at (425) 881-8830.